

Datalogic S.r.l.
Via S. Vitalino, 13
40012 Calderara di Reno — Italy
Tel. +39 051 3147011
Fax +39 051 3147205

©2017-2020 Datalogic S.p.A. and/or its affiliates

All rights reserved. Without limiting the rights under copyright, no part of this documentation may be reproduced, stored in or introduced into a retrieval system, or transmitted in any form or by any means, or for any purpose, without the express written permission of Datalogic S.p.A. and/or its affiliates.

Owners of Datalogic products are hereby granted a non-exclusive, revocable license to reproduce and transmit this documentation for the purchaser's own internal business purposes. Purchaser shall not remove or alter any proprietary notices, including copyright notices, contained in this documentation and shall ensure that all notices appear on any reproductions of the documentation.

Electronic versions of this document may be downloaded from the Datalogic website (www.datalogic.com). If you visit our website and would like to make comments or suggestions about this or other Datalogic publications, please let us know via the "Contact" page.

Disclaimer

Datalogic has taken reasonable measures to provide information in this manual that is complete and accurate, however, Datalogic shall not be liable for technical or editorial errors or omissions contained herein, nor for incidental or consequential damages resulting from the use of this material. Datalogic reserves the right to change any specification at any time without prior notice.

Trademarks

Datalogic and the Datalogic logo are registered trademarks of Datalogic S.p.A. in many countries, including the U.S.A. and the E.U.

Magellan is a trademark of Datalogic S.p.A. or of Datalogic and/or its affiliates, registered in many countries, including the U.S. and the E.U.
All other trademarks and brands are property of their respective owners.

Patents

See www.patents.datalogic.com for patent list.

Magellan 3450VSi

This product is covered by one or more of the following patents:

Utility patents: EP1307854B1, EP1828957B1, EP2596454B1, EP2622537B1, EP2638505B1, EP2666118B1, US6705527, US6877663, US7234641, US8245926, US8632011, US8919651, US9135484, US9514344, US9594936, ZL201180036226.1, ZL201180046917.X, ZL201180054011.2, ZL201280005748.X

Magellan 3550HSi

This product is covered by one or more of the following patents:

Utility patents: EP1307854B1, EP1828957B1, EP2622537B1, EP2638505B1, EP2666118B1, US6705527, US6877663, US7234641, US8245926, US8632011, US9135484, US9514344, US9594936, ZL201180046917.X, ZL201180054011.2, ZL201280005748.X

WEEE Statement

	Waste Electrical and Electronic Equipment (WEEE) Statement
--	---

English

For information about the disposal of Waste Electrical and Electronic Equipment (WEEE), please refer to the website at www.datalogic.com.

Italian

Per informazioni sullo smaltimento delle apparecchiature elettriche ed elettroniche consultare il sito Web www.datalogic.com.

French

Pour toute information relative à l'élimination des déchets électroniques (WEEE), veuillez consulter le site internet www.datalogic.com.

German

Informationen zur Entsorgung von Elektro- und Elektronik- Altgeräten (WEEE) erhalten Sie auf der Webseite www.datalogic.com.

Spanish

Si desea información acerca de los procedimientos para el desecho de los residuos del equipo eléctrico y electrónico (WEEE), visite la página Web www.datalogic.com.

Portuguese

Para informações sobre a disposição de Sucatagem de Equipamentos Elétricos e Eletrônicos (WEEE -Waste Electrical and Electronic Equipment), consultar o site web www.datalogic.com.

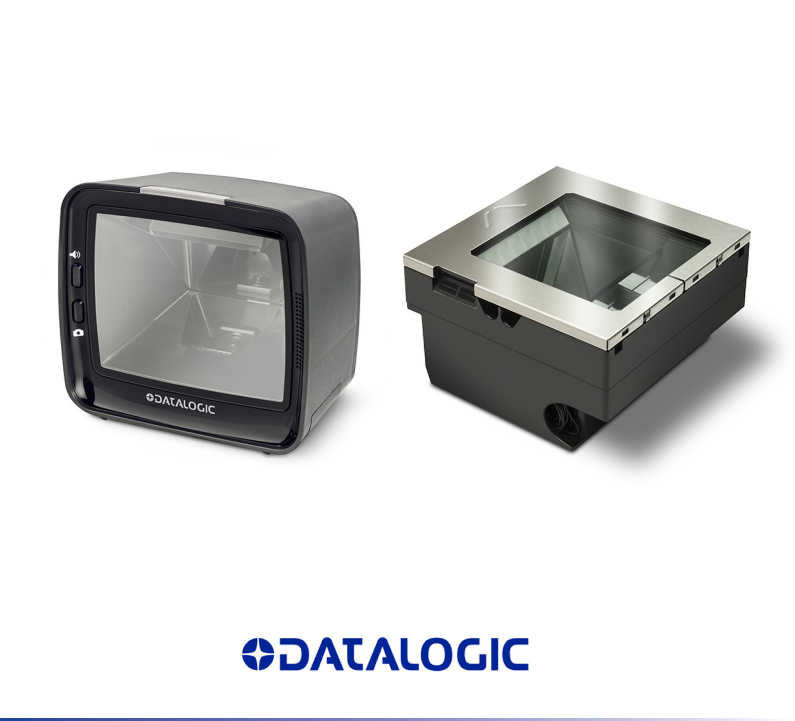
Chinese

有关处理废弃电气电子设备 (WEEE) 的信息, 请参考 Datalogic 公司的网站 www.datalogic.com。

Japanese

廃電気電子機器 (WEEE) の処理についての関連事項は Datalogic のサイト www.datalogic.com をご参照下さい。

MAGELLAN™ 3450VSi and 3550HSi REGULATORY ADDENDUM



Omni-Directional Imaging Scanner

©2017-2020 Datalogic S.p.A. and/or its affiliates. All rights reserved. Without limiting the rights under copyright, no part of this documentation may be reproduced, stored in or introduced into a retrieval system, or transmitted in any form or by any means, or for any purpose, without the express written permission of Datalogic S.p.A. and/or its affiliates Datalogic and the Datalogic logo are registered trademarks of Datalogic S.p.A. in many countries, including the U.S. and the E.U.

This document is an addendum to the Quick Reference Guide (QRG) for this product. See the QRG for additional product information.

www.datalogic.com



REGULATORY INFORMATION

FCC

This Equipment has been tested and found to comply with the limits for a Class B digital device, pursuant to part 15 of the FCC Rules. These limits are designed to provide reasonable protection against harmful interference in a residential installation. This equipment generates uses and can radiate radio frequency energy and, if not installed and used in accordance with these instructions, may cause harmful interference to radio communications. However, there is no guarantee that interference will not occur in a particular installation. If this equipment does cause harmful interference to radio or television reception, which can be determined by turning the equipment off and on, the user is encouraged to try to correct the interference by one or more of the following measures:

- Reorient or relocate the receiving antenna
- Increase the separation between the equipment and receiver
- Connect the equipment into an outlet on a circuit different from that to which receiver is connected
- Consult the dealer or an experienced radio / TV technician for help.



CAUTION: The User is cautioned that changes or modifications not expressly approved by the part responsible for compliance could void the user's authority to operate the equipment.

Canada

Innovation, Science and Economic Development Canada ICES-003 Class B Compliance statement:
CAN ICES-3(B)/NMB-3(B)

Korea

이 기기는 업무용 환경에서 사용할 목적으로 적합성평가를 받은 기기로서 가정용 환경에서 사용하는 경우 전파간섭의 우려가 있습니다.

LED Classification

EN62471 AND IEC62471 Lamp Illumination — Exempt Group

Customs Union

The CU conformity certification has been achieved; this allows the Product to bear the Eurasian mark of conformity.



BSMI Taiwan RoHS

For the complete table of the Taiwan RoHS Information please visit http://www.datalogic.com/BSMI_TW_RoHS.

有關台灣 RoHS 信息

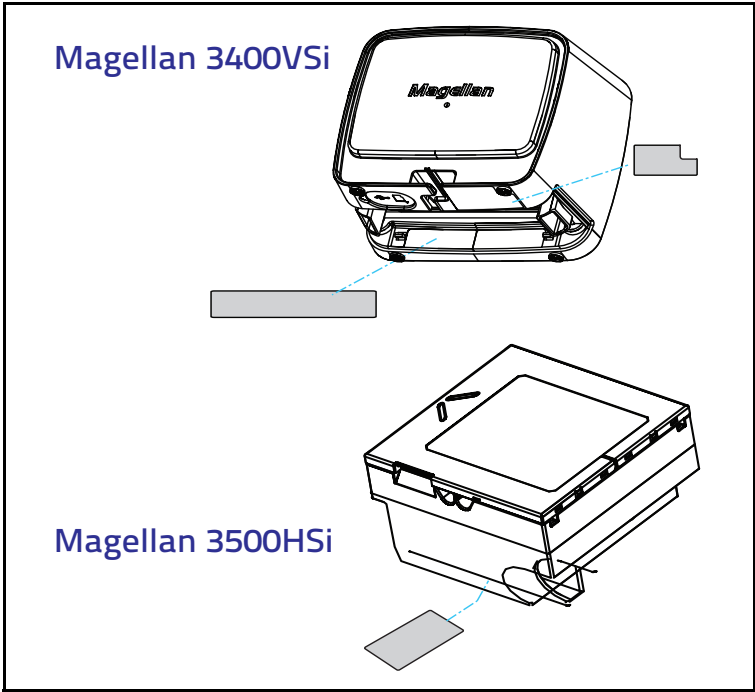
請登入網址 http://www.datalogic.com/BSMI_TW_RoHS 點擊下載。

PRODUCT LABELING

The figure below shows the general shape and position of the label located on the scanner beneath the back cover.



NOTE: Labels are shown to illustrate their location only. Please view the labels on your product for actual details.



Power Supply

Models require* either a Listed class II or class III with a Limited Power Source (LPS). For the safety certification to be valid, class III input power sources must be IEC/EN60950-1 (EN 60335-series, EN 60065 or relevant) approved.
Input: 100 - 240 VAC Output: +12 VDC
Max. Power: 18 W.
Max. Current: 1.5 A



Características de la fuente de alimentación eléctrica.

Atención

Entrada: 100 - 240 Vca
600mA 50/60 Hz
Salida: +12 VDC 1.5A



(-) Negativo al centro

Utilice en su red solo fuentes certificadas en Argentina.

El uso de fuentes de alimentación no compatibles puede resultar en riesgo de incendio o de choque eléctrico para el usuario.

*Power Off the Terminal (POT) units do not require a power supply

